



## DATI TECNICI - Technical data

precisione	accuracy	0,5%
caduta di tensione standard a richiesta	standard voltage drop on request	60mV 100mV - 150mV
coefficiente temperatura	temperature coefficient	0,002% / °C
materiale fondini	rod material	manganina / manganin
sovraccarichi:	overloads:	
permanente	continuous	1,2In
fino a 250A	up to 250A	10In per / for 5 sec.
da 251 a 2000A	from 251 to 2000A	5In per / for 5 sec.
da 2001 a 10000A	from 2001 to 10000A	2In per / for 5 sec.
temperatura di funzionamento	operating temperature	-25 +60 °C
temperatura di magazzino	storage temperature	-40 +80 °C
dimensioni a norme	dimensions according to	DIN 43703
caratteristiche elettriche e di sicurezza a norme	electrical and safety characteristics according to	IEC/EN60051 DIN43780
Viti complete di rondelle per mV	Screw and washers for mV	M5x10

## TIPO - Type

## DIMENSIONI - Dimensions

Corrente primaria Primary current	Codice - Code		
	60mV	100mV	150mV
1A	SSHMAX001X60	SSHMAX001XC0	SSHMAX001XC5
1,5A	SSHMAX1V5X60	SSHMAX1V5XC0	SSHMAX1V5XC5
2,5A	SSHMAX2V5X60	SSHMAX2V5XC0	SSHMAX2V5XC5
4A	SSHMAX004X60	SSHMAX004XC0	SSHMAX004XC5
6A	SSHMAX006X60	SSHMAX006XC0	SSHMAX006XC5
10A	SSHMAX010X60	SSHMAX010XC0	SSHMAX010XC5
15A	SSHMAX015X60	SSHMAX015XC0	SSHMAX015XC5
20A	SSHMAX020X60	SSHMAX020XC0	SSHMAX020XC5
25A	SSHMAX025X60	SSHMAX025XC0	SSHMAX025XC5

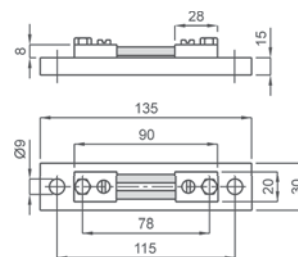


Fig.1

kg 0,125

## ACCESSORI IN DOTAZIONE:

- basetta di supporto isolante
- 2 bulloni testa esagonale M5x12 e rondelle

## SUPPLIED ACCESSORIES:

- insulating base
- 2 hexagonal bolts M5x12 and washers

Corrente primaria Primary current	Codice - Code		
	60mV	100mV	150mV
30A	SSHMAX030X60	SSHMAX030XC0	SSHMAX030XC5
40A	SSHMAX040X60	SSHMAX040XC0	SSHMAX040XC5
50A	SSHMAX050X60	SSHMAX050XC0	SSHMAX050XC5
60A	SSHMAX060X60	SSHMAX060XC0	SSHMAX060XC5
80A	SSHMAX080X60	SSHMAX080XC0	SSHMAX080XC5
100A	SSHMAX100X60	SSHMAX100XC0	SSHMAX100XC5
120A	SSHMAX120X60	SSHMAX120XC0	SSHMAX120XC5
150A	SSHMAX150X60	SSHMAX150XC0	SSHMAX150XC5

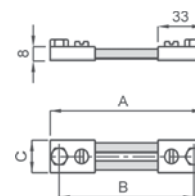


Fig.2

kg 0,20

	60mV	100mV	150mV
<b>A</b>	100	123	225
<b>B</b>	80	103	205
<b>C</b>	20	20	25

## ACCESSORI IN DOTAZIONE:

- 2 bulloni testa esagonale M8x16 e rondelle

## SUPPLIED ACCESSORIES:

- 2 hexagonal bolts M8x16 and washers

## TIPO - Type

## DIMENSIONI - Dimensions

Corrente primaria Primary current	Codice - Code		
	60mV	100mV	150mV
200A	<b>SSHMAX200X60</b>	<b>SSHMAX200XC0</b>	<b>SSHMAX200XC5</b>
250A	<b>SSHMAX250X60</b>	<b>SSHMAX250XC0</b>	<b>SSHMAX250XC5</b>
300A	<b>SSHMAX300X60</b>	<b>SSHMAX300XC0</b>	<b>SSHMAX300XC5</b>

### ACCESSORI IN DOTAZIONE:

- 2 bulloni testa esagonale M12x40 e rondelle

### SUPPLIED ACCESSORIES:

- 2 hexagonal bolts M12x40 and washers

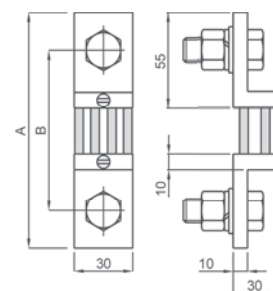


Fig.3

	60mV	100mV	150mV
<b>A</b>	145	168	270
<b>B</b>	105	128	230
<b>kg</b>	<b>0,45</b>	<b>0,55</b>	<b>0,85</b>

Corrente primaria Primary current	Codice - Code		
	60mV	100mV	150mV
400A	<b>SSHMAX400X60</b>	<b>SSHMAX400XC0</b>	<b>SSHMAX400XC5</b>
500A	<b>SSHMAX500X60</b>	<b>SSHMAX500XC0</b>	<b>SSHMAX500XC5</b>
600A	<b>SSHMAX600X60</b>	<b>SSHMAX600XC0</b>	<b>SSHMAX600XC5</b>
800A	<b>SSHMAX800X60</b>	<b>SSHMAX800XC0</b>	<b>SSHMAX800XC5</b>
1000A	<b>SSHMAX1K0X60</b>	<b>SSHMAX1K0XC0</b>	<b>SSHMAX1K0XC5</b>

### ACCESSORI IN DOTAZIONE:

**per 400A - 500A - 600A**

- 2 bulloni testa esagonale M16x45 e rondelle

**per 800A - 1000A**

- 2 bulloni testa esagonale M20x50 e rondelle

### SUPPLIED ACCESSORIES:

**for 400A - 500A - 600A**

- 2 hexagonal bolts M16x45 and washers

**for 800A - 1000A**

- 2 hexagonal bolts M20x50 and washers

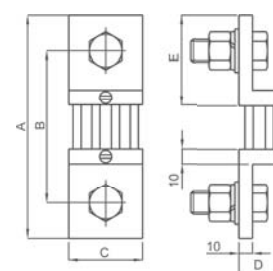


Fig.4

	400A - 500A - 600A			800A - 1000A		
	60mV	100mV	150mV	60mV	100mV	150mV
<b>A</b>	145	168	270	165	188	290
<b>B</b>	105	128	230	115	138	240
<b>C</b>	40			60		70
<b>D</b>	30			30		60
<b>E</b>	55			65		
<b>kg</b>	<b>0,68</b>	<b>0,85</b>	<b>1,10</b>	<b>1,05</b>	<b>1,45</b>	<b>1,80</b>

Corrente primaria Primary current	Codice - Code	
	60mV	100mV
1200A	<b>SSHMAX1K2X60</b>	<b>SSHMAX1K2XC0</b>
1500A	<b>SSHMAX1K5X60</b>	<b>SSHMAX1K5XC0</b>
2000A	<b>SSHMAX2K0X60</b>	<b>SSHMAX2K0XC0</b>
2500A	<b>SSHMAX2K5X60</b>	<b>SSHMAX2K5XC0</b>

### ACCESSORI IN DOTAZIONE:

**per 1200A - 1500A**

- 4 bulloni testa esagonale M16x45 e rondelle

**per 2000A - 2500A**

- 4 bulloni testa esagonale M20x60 e rondelle

### SUPPLIED ACCESSORIES:

**for 1200A - 1500A**

- 4 hexagonal bolts M16x45 and washers

**for 2000A - 2500A**

- 4 hexagonal bolts M20x60 and washers

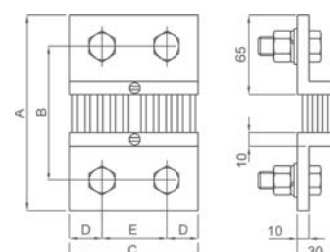


Fig.5

	1200A - 1500A		2000A - 2500A	
	60mV	100mV	60mV	100mV
<b>A</b>	165	188	165	188
<b>B</b>	115	138	115	138
<b>C</b>	90		120	
<b>D</b>	21		30	
<b>E</b>	48		60	
<b>kg</b>	<b>1,65</b>	<b>1,80</b>	<b>2,20</b>	<b>2,40</b>

## TIPO - Type

## DIMENSIONI - Dimensions

Corrente primaria Primary current	Codice - Code	
	150mV	
1200A	<b>SSHMAX1K2XC5</b>	
1500A	<b>SSHMAX1K5XC5</b>	
2000A	<b>SSHMAX2K0XC5</b>	
2500A	<b>SSHMAX2K5XC5</b>	

### ACCESSORI IN DOTAZIONE:

per 1200A - 1500A

- 4 bulloni testa esagonale M16x60 e rondelle

per 2000A - 2500A

- 4 bulloni testa esagonale M20x60 e rondelle

### SUPPLIED ACCESSORIES:

for 1200A - 1500A

- 4 hexagonal bolts M16x60 and washers

for 2000A - 2500A

- 4 hexagonal bolts M20x60 and washers

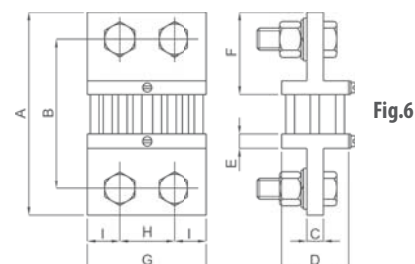
Corrente primaria Primary current	Codice - Code		
	60mV	100mV	150mV
3000A	<b>SSHMAX3K0X60</b>	<b>SSHMAX3K0XC0</b>	<b>SSHMAX3K0XC5</b>
4000A	<b>SSHMAX4K0X60</b>	<b>SSHMAX4K0XC0</b>	<b>SSHMAX4K0XC5</b>

### ACCESSORI IN DOTAZIONE:

- 4 bulloni testa esagonale M20x60 e rondelle

### SUPPLIED ACCESSORIES:

- 4 hexagonal bolts M20x60 and washers



	1200A 1500A	2000A 2500A	3000A - 4000A		
	150mV		60mV	100mV	150mV
A	168	165	188	300	
B	128	115	138	250	
C	15	15	25		
D	60	60	130		
E	10	10	15		
F	65	65	70		
G	90	120	120		
H	48	60	60		
I	21	30	30		
kg	3,50	4,40	4,25	4,90	7,70

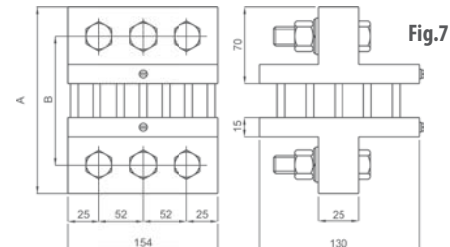
Corrente primaria Primary current	Codice - Code		
	60mV	100mV	150mV
5000A	<b>SSHMAX5K0X60</b>	<b>SSHMAX5K0XC0</b>	<b>SSHMAX5K0XC5</b>
6000A	<b>SSHMAX6K0X60</b>	<b>SSHMAX6K0XC0</b>	<b>SSHMAX6K0XC5</b>

### ACCESSORI IN DOTAZIONE:

- 6 bulloni testa esagonale M20x80 e rondelle

### SUPPLIED ACCESSORIES:

- 6 hexagonal bolts M20x80 and washers



	60mV	100mV	150mV
A	175	198	300
B	125	148	250
kg	11,60	12,75	19,00

Corrente primaria Primary current	Codice - Code		
	60mV	100mV	150mV
8000A	<b>SSHMAX8K0X60</b>	<b>SSHMAX8K0XC0</b>	<b>SSHMAX8K0XC5</b>
10000A	<b>SSHMAX10KX60</b>	<b>SSHMAX10KXC0</b>	<b>SSHMAX10KXC5</b>
12000A	<b>SSHMAX12KX60</b>	<b>SSHMAX12KXC0</b>	<b>SSHMAX12KXC5</b>
15000A	<b>SSHMAX15KX60</b>	<b>SSHMAX15KXC0</b>	<b>SSHMAX15KXC5</b>

### ACCESSORI IN DOTAZIONE:

per 8000A - 10000A - 12000A

- 8 bulloni testa esagonale M20x80 e rondelle

per 15000A

- 12 bulloni testa esagonale M20x85 e rondelle

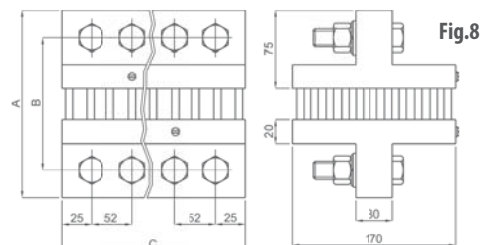
### SUPPLIED ACCESSORIES:

for 8000A - 10000A - 12000A

- 8 hexagonal bolts M20x80 and washers

for 15000A

- 12 hexagonal bolts M20x85 and washers



	8000A - 10000A			12000A - 15000A		
	60mV	100mV	150mV	60mV	100mV	150mV
A	185	208	310	185	208	310
B	135	158	260	135	158	260
C	206			310		
kg	21,25	22,65	35,00	31,95	33,75	38,35



DATI TECNICI - Technical datas

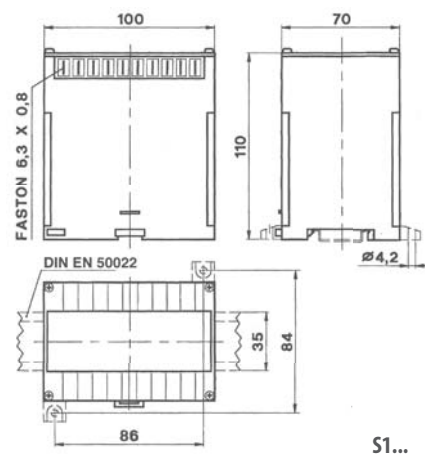


materiale custodia	case material	termoplastico autoestinguente
		self extinguishing thermoplastic
secondario	secondary	100V-1mA
precisione	accuracy	1%
corrente assorbita	current consumption	2mA
sovraccarico permanente	continuous overloads	1,2Vn
sovraccarico istantaneo	instantaneous overload	2Vn per / for 5sec.
temperatura di funzionamento	operating temperature	-25 +60 °C
temperatura di magazzino	storage temperature	-40 +80 °C
costruzione a norme	manufactured according to	CEI, IEC, VDE, DIN, BS, CENELEC

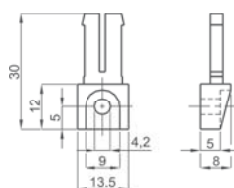
TIPO - Type

DIMENSIONI - Dimension

Tensione primaria Primary voltage	Tensione di prova Test voltage	Codice Code
400 V	3 kV	<b>S1XMX400XCO</b>
500 V	3 kV	<b>S1XMX500XCO</b>
700 V	3 kV	<b>S1XMX700XCO</b>
800 V	3 kV	<b>S1XMX800XCO</b>
1000 V	3 kV	<b>S1XMX1K0XCO</b>
1200 V	5 kV	<b>S1XMX1K2XCO</b>
1500 V	5 kV	<b>S1XMX1K5XCO</b>
2000 V	5 kV	<b>S5XMX2K0XCO</b>
2500 V	7 kV	<b>S5XMX2K5XCO</b>
3000 V	7 kV	<b>S5XMX3K0XCO</b>
4000 V	9 kV	<b>S5XMX4K0XCO</b>
5000 V	11 kV	<b>S5XMX5K0XCO</b>



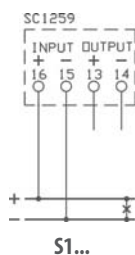
S1...



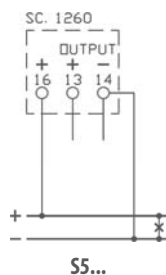
OPZIONE - Piedini di fissaggio  
cod. **9SBMPDC**

OPTION - Fixing feet  
cod. **9SBMPDC**

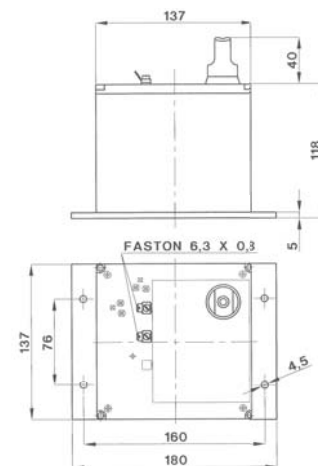
SCHEMI DI INSERZIONE - Wiring diagrams



S1...



S5...



S5...