



### DATI TECNICI

elemento indicatore  
lettura

arresto di retromarcia  
classe di precisione  
corrente max I<sub>max</sub>  
sovracorrente di breve durata

tensione di funzionamento  
frequenza di riferimento  
consumo circuiti di corrente  
consumo circuiti di tensione  
temperatura di funzionamento  
temperatura di magazzinaggio  
tensione di prova  
conforme a

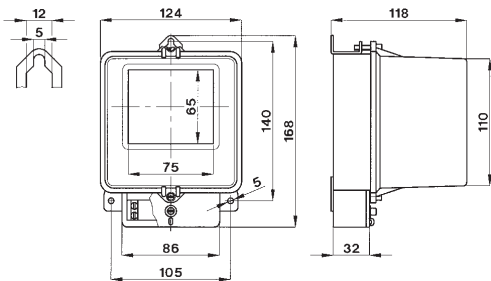
### TECHNICAL DATA

counting register  
reading

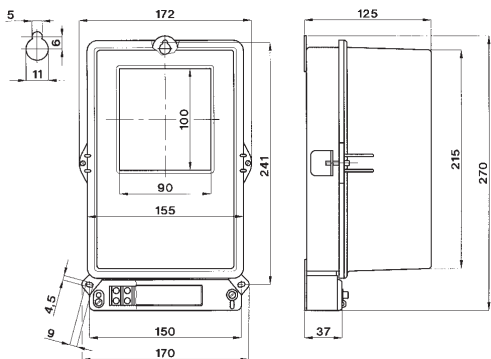
reverse counting locking  
accuracy class  
maximum current I<sub>max</sub>  
short-term overcurrent

operating voltage  
reference frequency  
current circuits consumption  
voltage circuits consumption  
operating temperature  
storage temperature  
test voltage  
according to

5 cifre/digits (h. 5mm)  
indiretta/indirect [suTA/on CT]  
diretta/direct [5(20)A-10(40)A]  
si/yes  
2 (kwh), 3 (kVArh)  
1.2 lb  
20 I<sub>max</sub> (0.5 sec.) [suTA/on CT]  
25 I<sub>max</sub> (1msec.) [5(20)A-10(40)A]  
0.8...0.9...1.1...1.2Un  
50 o/or 60Hz  
< 0.5VA  
< 5VA  
-10...0...+40...+50°C  
-30...+70°C  
2kV, 50Hz, 60sec.  
EN 60521



**GSPWS... - GSPRS...**  
kg 1,100



**GSPWD... - GSPWT... - GSPRD... - GSPRT...**  
kg 3,00

SISTEMA SYSTEM	INGRESSI - INPUTS		CODICE - CODE	
	V	I	ENERGIA ATTIVA ACTIVE ENERGY	ENERGIA REATTIVA REACTIVE ENERGY
Monofase Single-phase	220/240 V	5 (20)A diretti/direct	GSPWS52XXXD2	GSPRS52XXXD2
		10 (40) A diretti/direct	GSPWS14XXXD2	GSPRS14XXXD2
	100 V	su TA/5 A on CT/5A	GSPWSXXXXXCO	GSPRSXXXXXCO
	220/240 V		GSPWSXXXXXD2	GSPRSXXXXXD2
	380/415 V		GSPWSXXXXXT8	GSPRSXXXXXT8
Trifase, 3 fili, carico squilibrato <i>Three-phase, 3 wires, unbalanced load</i>	380/415 V	5 (20)A diretti/direct	GSPWD52XXXT8	GSPRD52XXXT8
		10 (40) A diretti/direct	GSPWD14XXXT8	GSPRD14XXXT8
	100 V	su TA/5 A on CT/5A	GSPWDXXXXXCO	GSPRDXXXXXCO
	220/240 V		GSPWDXXXXXD2	GSPRDXXXXXD2
	380/415 V		GSPWDXXXXXT8	GSPRDXXXXXT8
Trifase, 4 fili, carico squilibrato <i>Three-phase, 4 wires, unbalanced load</i>	380/415 V	5 (20)A diretti/direct	GSPWT52XXXT8	GSPRT52XXXT8
		10 (40) A diretti/direct	GSPWT14XXXT8	GSPRT14XXXT8
	100 V	su TA/5 A on CT/5A	GSPWTXXXXXCO	GSPRTXXXXXCO
	220/240 V		GSPWTXXXXXD2	GSPRTXXXXXD2
	380/415 V		GSPWTXXXXXT8	GSPRTXXXXXT8

### DESCRIZIONE

Contatore ad induzione di energia attiva o reattiva, inserzione diretta 5(20)A o 10(40)A o su TA /5A, adatto per l'impiego in sistemi monofase o trifase con carico squilibrato, anche in presenza di forme d'onda distorte; per i tipi trifase è disponibile la ritrasmissione del conteggio dell'energia (opzionale) mediante uscita impulsiva isolata, con emissione di 1 impulso ad ogni rotazione completa del disco.

### DESCRIPTION

Induction active or reactive energy meter, direct connection 5(20)A or 10(40)A or connection on CT/5A, suitable for single or three-phase systems with unbalanced load, even with distorted waveforms; for three-phase types, it is available the energy retransmission (optional) via insulated pulses output, with 1 pulse emitted every full revolution of the disk.

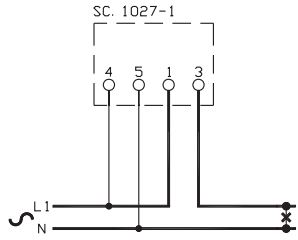
### DATI PER L'ORDINAZIONE

- codice
- opzioni (vedi pag. 9.3)

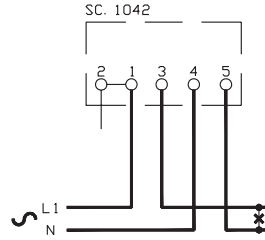
### ORDERING INFORMATION

- code
- options (see page 9.3)

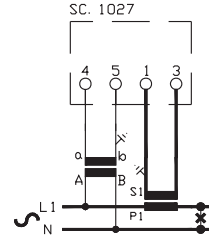
## SCHEMI DI INSERZIONE - WIRING DIAGRAMS



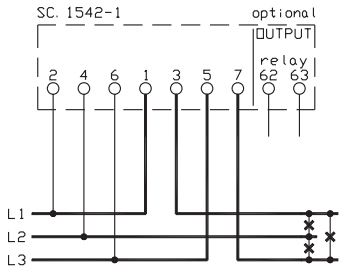
**GSPWS52XXXD2 - GSPRS52XXXD2**



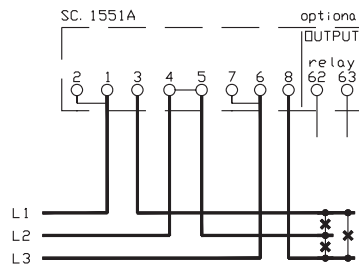
**GSPWS14XXXD2 - GSPRS14XXXD2**



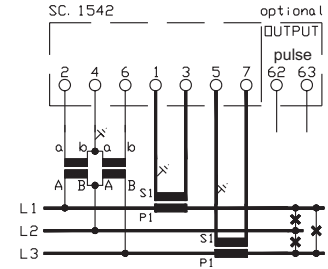
**GSPWSXXXX... - GSPRSXXXX...**



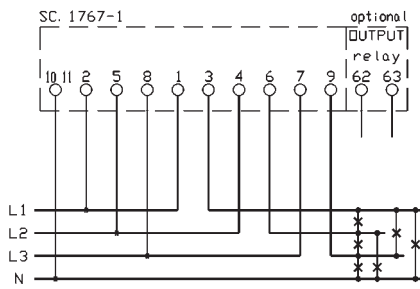
**GSPWD52XXXT8 - GSPRD52XXXT8**



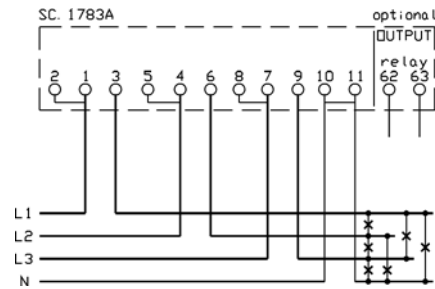
**GSPWD14XXXT8 - GSPRD14XXXT8**



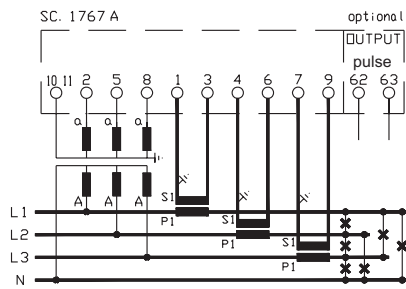
**GSPWDXXXX... - GSPRDXXXX...**



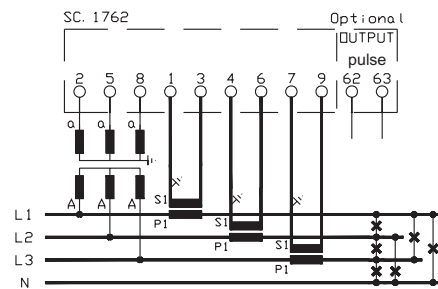
**GSPWT52XXXT8 - GSPRT52XXXT8**



**GSPWT14XXXT8 - GSPRT14XXXT8**



**GSPWTXXXX...**



**GSPRTXXXX...**